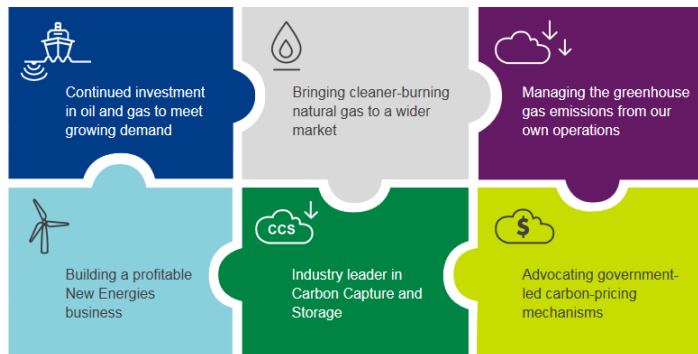




# Strategy for Sustainability



**Kristina Wittmeyer**

Energy Transition Advisor, Norske Shell

# Definitions & cautionary note

The companies in which Royal Dutch Shell plc directly and indirectly owns investments are separate legal entities. In this presentation “Shell”, “Shell group” and “Royal Dutch Shell” are sometimes used for convenience where references are made to Royal Dutch Shell plc and its subsidiaries in general. Likewise, the words “we”, “us” and “our” are also used to refer to subsidiaries in general or to those who work for them. These expressions are also used where no useful purpose is served by identifying the particular company or companies. “Subsidiaries”, “Shell subsidiaries” and “Shell companies” as used in this presentation refer to companies over which Royal Dutch Shell plc either directly or indirectly has control. Entities and unincorporated arrangements over which Shell has joint control are generally referred to “joint ventures” and “joint operations” respectively. Entities over which Shell has significant influence but neither control nor joint control are referred to as “associates”. The term “Shell interest” is used for convenience to indicate the direct and/or indirect ownership interest held by Shell in a venture, partnership or company, after exclusion of all third-party interest.

This presentation contains forward-looking statements concerning the financial condition, results of operations and businesses of Royal Dutch Shell. All statements other than statements of historical fact are, or may be deemed to be, forward-looking statements. Forward-looking statements are statements of future expectations that are based on management's current expectations and assumptions and involve known and unknown risks and uncertainties that could cause actual results, performance or events to differ materially from those expressed or implied in these statements. Forward-looking statements include, among other things, statements concerning the potential exposure of Royal Dutch Shell to market risks and statements expressing management's expectations, beliefs, estimates, forecasts, projections and assumptions. These forward-looking statements are identified by their use of terms and phrases such as “anticipate”, “believe”, “could”, “estimate”, “expect”, “goals”, “intend”, “may”, “objectives”, “outlook”, “plan”, “probably”, “project”, “risks”, “schedule”, “seek”, “should”, “target”, “will” and similar terms and phrases. There are a number of factors that could affect the future operations of Royal Dutch Shell and could cause those results to differ materially from those expressed in the forward-looking statements included in this [report], including (without limitation): (a) price fluctuations in crude oil and natural gas; (b) changes in demand for Shell's products; (c) currency fluctuations; (d) drilling and production results; (e) reserves estimates; (f) loss of market share and industry competition; (g) environmental and physical risks; (h) risks associated with the identification of suitable potential acquisition properties and targets, and successful negotiation and completion of such transactions; (i) the risk of doing business in developing countries and countries subject to international sanctions; (j) legislative, fiscal and regulatory developments including regulatory measures addressing climate change; (k) economic and financial market conditions in various countries and regions; (l) political risks, including the risks of expropriation and renegotiation of the terms of contracts with governmental entities, delays or advancements in the approval of projects and delays in the reimbursement for shared costs; and (m) changes in trading conditions. No assurance is provided that future dividend payments will match or exceed previous dividend payments. All forward-looking statements contained in this presentation are expressly qualified in their entirety by the cautionary statements contained or referred to in this section. Readers should not place undue reliance on forward-looking statements. Additional risk factors that may affect future results are contained in Royal Dutch Shell's 20-F for the year ended December 31, 2016 (available at [www.shell.com/investor](http://www.shell.com/investor) and [www.sec.gov](http://www.sec.gov) ). These risk factors also expressly qualify all forward looking statements contained in this presentation and should be considered by the reader. Each forward-looking statement speaks only as of the date of this presentation, [DATE]. Neither Royal Dutch Shell plc nor any of its subsidiaries undertake any obligation to publicly update or revise any forward-looking statement as a result of new information, future events or other information. In light of these risks, results could differ materially from those stated, implied or inferred from the forward-looking statements contained in this presentation. This presentation may contain references to Shell's website. These references are for the readers' convenience only. Shell is not incorporating by reference any information posted on [www.shell.com](http://www.shell.com). We may have used certain terms, such as resources, in this presentation that United States Securities and Exchange Commission (SEC) strictly prohibits us from including in our filings with the SEC. U.S. Investors are urged to consider closely the disclosure in our Form 20-F, File No 1-32575, available on the SEC website [www.sec.gov](http://www.sec.gov).

# Shell globally

92,000

Employees

70+

#countries we operate in



3.7 mln boe /d

1% global energy supply

2% world's oil production



50%

Of our production comes from Natural Gas

~\$25 bln investments

~\$1-2 bln investments in NE

1 million ton

Amount of CO2 captured at Quest facility (2016)

# Shell Norway

~500

Employees

Partner in 30

Licenses on NCS

70%

Of the 2017 production was Gas, 85% of the lifecycle income is from Gas



3 Operated Assets in production

Ormen Lange

Knarr

Gaupe



CO<sub>2</sub> Transport & Storage

Partner in Northern Lights with Total and Equinor, full scale CS

# Shell's ambition

Ben van Beurden, update to investors on the company's strategy;

"Shell aims to cut the net carbon footprint of its energy products – expressed in grams of CO2 per megajoule consumed – by around half by 2050. As an interim step, by 2035, we aim to reduce it by around 20%," said van Beurden.

"We will do this in step with society's drive to align with the Paris goals, and we will do it **by reducing the net carbon footprint of the full range of Shell emissions, from our operations and from the consumption of our products.**"

The development of **new energies** as a future growth platform will accelerate and the company will increase the capital allocated to this business to **\$1 to \$2 billion per year until 2020.**



# Sky: Seven big steps forward from now to 2070



Carbon pricing



Energy efficiency



Electrification of  
final energy



Grow new  
energy systems



Carbon capture  
and storage



End deforestation





# Contents

---

Our world's energy challenge

New Energies

New Fuels

- Biofuels
- Hydrogen
- Electric mobility
- Gas for transport
- Gas to liquids for transport

Power

- Energy solutions
- Energy access
- Power trading & marketing
- Wind
- Solar

Nature Based Solutions

Shell Ventures

Digital businesses

Research and development

# New Fuels



## Biofuels

Conventional &  
advanced biofuels

A/S Norske Shell



## Hydrogen

Active in  
hydrogen electric



## Electric Mobility

Active in EVs  
charging  
infrastructure and  
technology



## Gas for transport

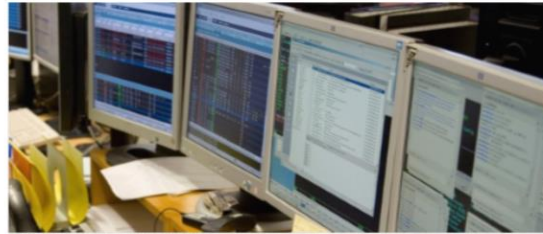
Offering gas to  
liquids (GTL) and  
liquefied natural gas  
(LNG)



# Power



Customer solutions



Optimization



Generation

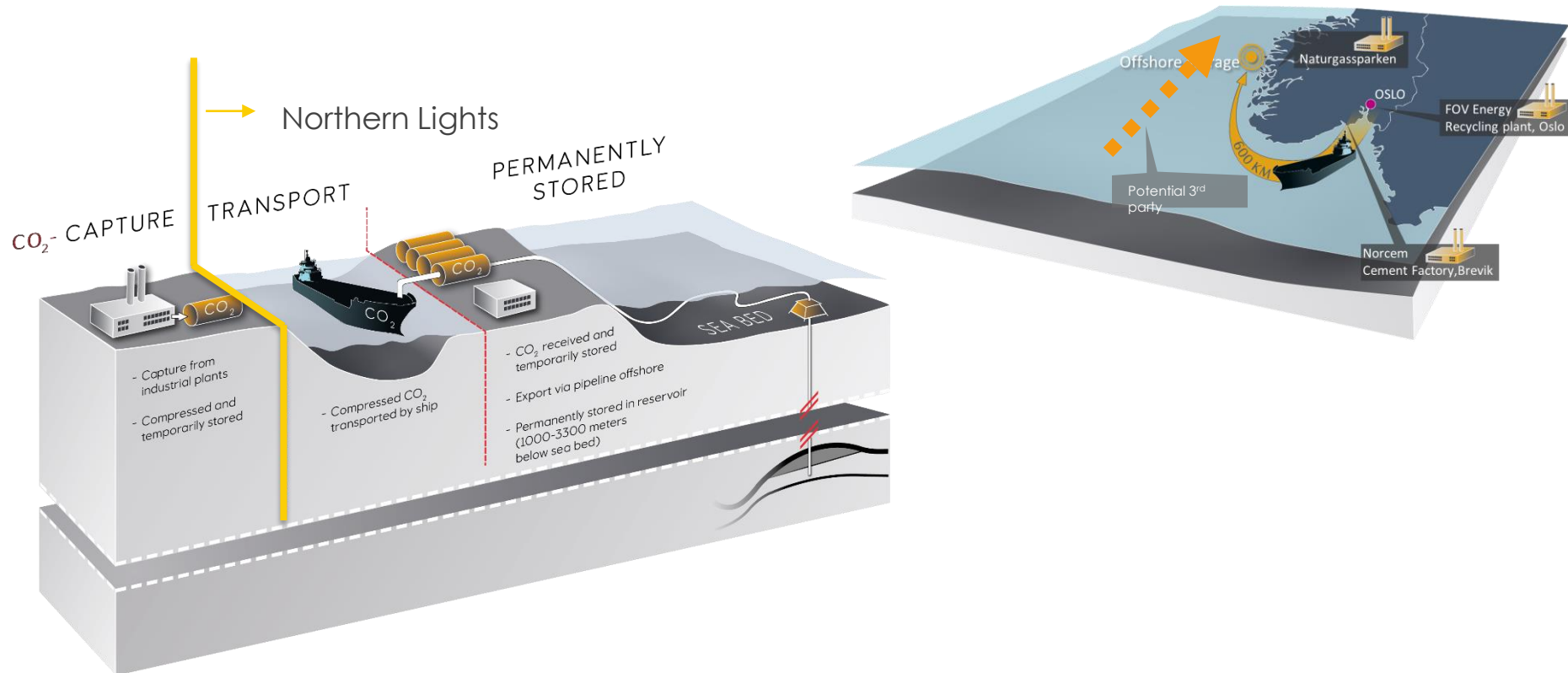




## Shell's Corporate Venture Arm

- Investor and partner in companies developing promising technologies which complement Shell's business
- Considers companies in all stages of maturity

# Northern Lights: Part of a full CCS value chain



Norway full-scale CCS project combines industrial sources of CO<sub>2</sub> from Norway and other countries with safe storage on Norwegian continental shelf

Objective: Stimulate development of CCS so that long-term climate targets in Norway and EU can be reached at lowest possible costs

# Technology Centre Mongstad

---





# Delivering a profitable energy access business



- Mini-grid company
- Hybrid solar and biomass gasification technology
- Reliable electricity on a pay-as-you-go basis.
- Operations in India and Tanzania



- Off-grid solar home systems company
- Customised and modular systems
- Operations in Uganda and Kenya



- Technology company
- Universal smart metering platform for mini grids and other utilities
- Focused in Africa and Asia



- Solar debt finance company
- Provides financing for solar assets in emerging economies, including inventory, working capital, construction, and structured finance loans.

